

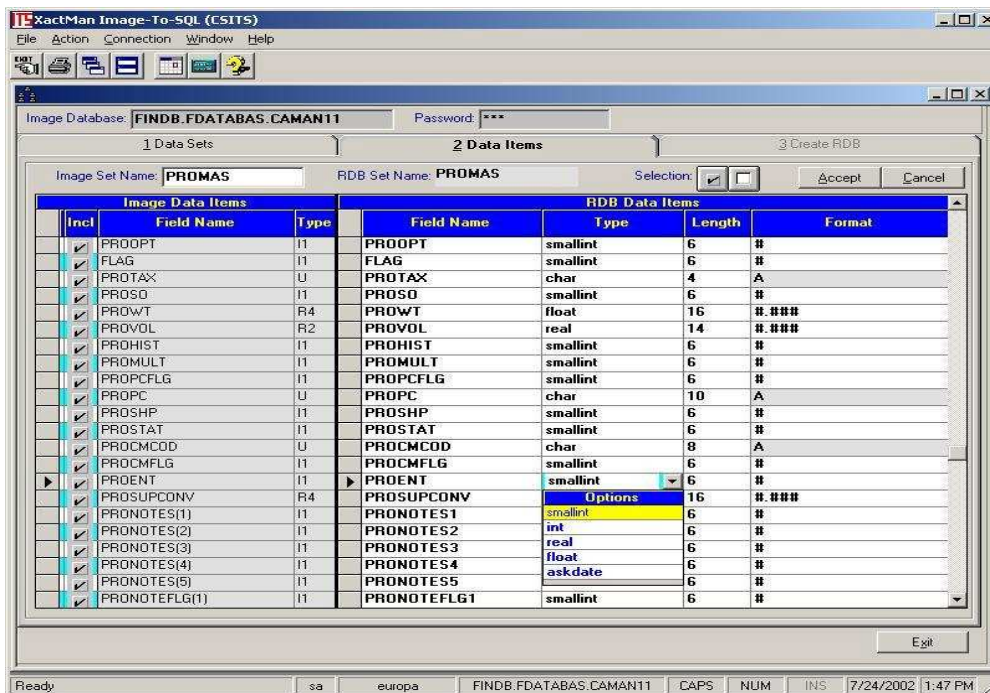
XC/ITS XactMan® Image To SQL Converter

ITS/3000 is a fully functional and automated creation and update tool for use with any Image database. ITS/3000 effortlessly creates the data structure for a SQL database (Allbase/SQL, Oracle, Sybase, Informix, SQL server), loads the Image data into the relational database, and updates the relational database as desired.

ITS/3000 is designed to operate in an HP3000 or networked client server environment, providing access to relevant Image data shadowed in the SQL database. Having the data in a relational structure allows access by users utilizing their choice of desktop analysis and reporting products. This offers unparalleled flexibility in the analysis and reporting of data. Summary to Detail "drill down" analysis of your data is a key feature of these products with extensive graphical presentation of the data for visual analysis. See our Data Analysis product for further information.

Another benefit of the product is its ability to facilitate the implementation of a data warehouse strategy for archived data. This is accomplished by moving historic data from the HP3000 Image-based production system to the SQL DB on the HP3000 or network server for user access. By implementing a strategy to offload the Image data to an SQL repository, ITS/3000 effectively frees the production environment of the overhead associated with analysis and reporting. It also offers remote PC-based analysis on a laptop for the traveling executive.

This application creates the SQL database structure by mapping to the Image schema. It then programmatically creates the SQL script to generate the SQL database. SQL format specifications are built and an extract file for the Image data is created. The data is then loaded into the SQL database in a completely automated mode of operation. Complete Image databases or individual datasets can be selected for conversion to SQL. Additional SQL tables or table entries can be created with logic to populate the tables or table entries. The update function of the product refreshes the SQL database with the latest Image data.



- Creates SQL db structure from Image
- Creates Image extract
- Generates SQL script to load data
- Loads data into SQL db
- Provides user access with desktop client-server reporting and analysis tools.

Requirements: Windows 95/98/NT/2000, Internet Explorer 4.0 or higher, TCP/IP network access to HP/3000